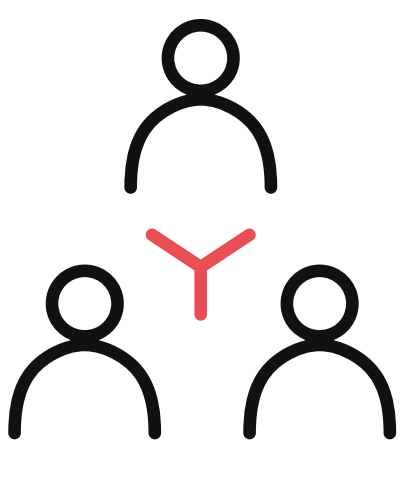




# People Planet

## Project Start: Client ESG Brief



### Client ESG Corporate Strategy

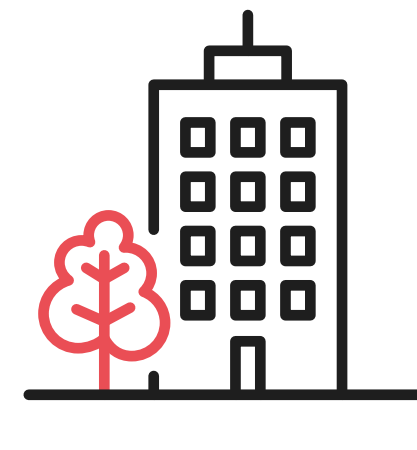
We review client ESG strategies, ensuring that the project will enhance the client's wider corporate outcomes.



### Client ESG Funding or Reporting Requirements

We provide ESG linked development or investment funding support, helping clients to meet any ESG obligations or evidence to secure affordable financing.

## ESG Project Setup



### Building ESG Audit

Our team will create detailed building audits identifying how the location, fabric, utilities, contracts, health, wellbeing, certifications and accreditation risks and opportunities will influence the design solution.



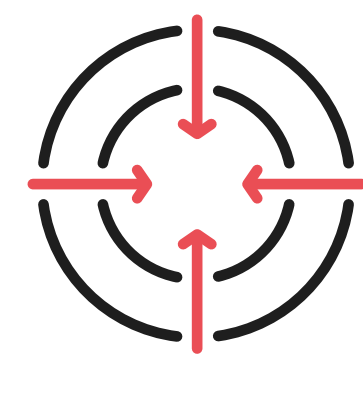
### Accreditations

We recommend and execute the most appropriate accreditations to improve building performance and value. We have extensive experience with BREEAM, LEED, NABERS UK, SKA, WELL, Fitwell and WIREScore.



### Robust Contracts, Guarantees & Reporting

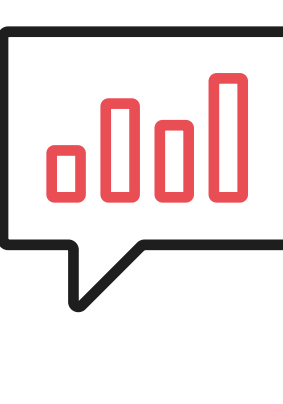
Also included by us are robust guarantees, appointment contracts and transparent reporting for client protection, including guaranteeing the performance of our supply chain.



### Development ESG Strategy & Targets

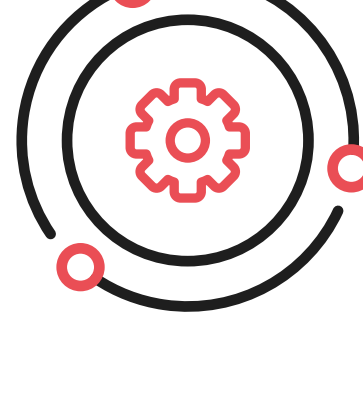
We define how ESG attributes are to be integrated, with specific project ESG targets set for both the construction and operation phases.

## ESG Through Construction



### Track Record & Financial Protection

As our parent company, Workplace Futures Group, has successfully operated for 27 years and is now a £100m turnover business, this ensures that our experience will reduce any risks associated with any project.



### Supply-Chain

Our industry leading supply chain support has adopted ESG practices and processes. Our long-term relationships also allow us to guarantee supply chain performance.



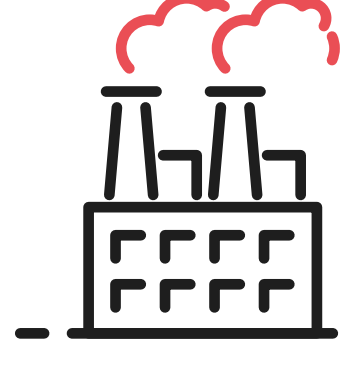
### Design Quality (In-house)

Our in-house design specialists integrate ESG attributes into every element of the design: from efficient building fabric to low embodied carbon materials, right through to wellbeing, appliance efficiency, product durability and reducing material lifecycle costings.



### Sustainable Demolition & Construction

From our in-house design team to our supply chain, we seek sustainable development and construction approaches.



### Greenhouse Gas Emissions

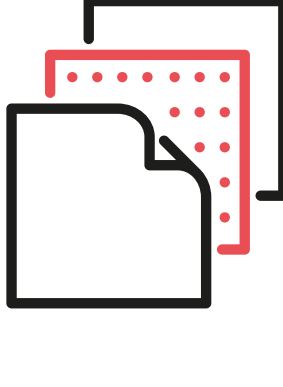
We complete whole life-cycle carbon assessments to understand and reduce both embodied and operational greenhouse gas emissions, helping to achieve environmental targets.



### Health, Wellbeing & Safety

We design to prevent against the most common physical health and mental wellbeing challenges the UK population faces, as well as seeking to enhance quality of life experienced in the space.

We are ISO 45001 accredited for health and safety and Lighthouse Club partners, providing wellbeing support for construction workers through every project.



### Material Selection

Careful material selection to balance durability, low embodied carbon, low volatile organic compound, sustainably sourced and local materials.



### Renewable & Conservation Technology

We will transition away from fossil fuels, increasing renewable energy technologies wherever possible.

We reduce energy, water and waste demands through conservation. We also use technologies such as water restrictors, low energy fittings and appliances.

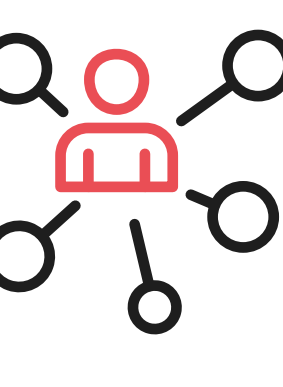


### Waste & Pollution

We use ISO 14001 accredited environmental management systems, recording all waste and minimizing deliveries.

We reduce, re-use and recycle building waste.

We have also partnered with Business2Schools, making sure to rehome unwanted office furniture from clients to local schools.



### Social Value

We create employment, apprenticeship, graduate and training opportunities within all our projects. We also partner with local supply chains and businesses to enhance the local communities' economic opportunities.



### FFE

Our in-house furniture business, Platform, creates bespoke furniture packages using low embodied carbon, and low volatile organic compound materials with ergonomic designs for health and wellbeing.



### Biodiversity

We audit local green space quality and specify internal planting to enhance interaction with nature.

## ESG Through Handover



### Warranties, Certifications & Insurances

We provide robust warranties, certifications and works insurance to protect all stakeholders.



### ESG Handover Information

We communicate the ESG benefits of the building, helping clients communicate the unique selling points to their stakeholders.



### ESG Marketing Support

We deliver strategic marketing support, helping clients communicate the ESG benefits of their building to their business, team, and tenants.



### Defects Cover

We provide 12 months defects cover, giving you peace of mind throughout.



### Dedicated Aftercare Team

For every project, we guarantee that a dedicated aftercare team will be provided.

## ESG Through Operation: Client Benefits



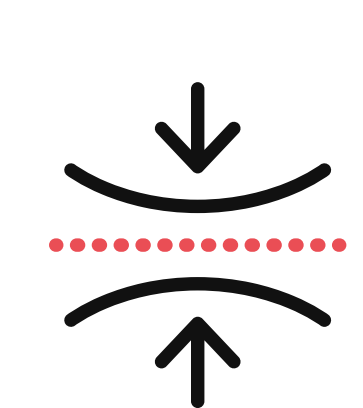
### Environmental

Lower operational greenhouse gas emissions  
+  
Lower utility use & bills  
+  
Better air quality, biodiversity & environmental footprint



### Social

Better physical & mental health for all occupants  
+  
Better productivity for occupants  
+  
Better social impact with the local economy



### Governance

Reduced building risk for changing legislation  
+  
Better unique selling points for the building  
+  
Better access to ESG funding and asset value opportunities

Contact us at [ESG@WEARETWO.COM](mailto:ESG@WEARETWO.COM)

